



Paris charm bracelet

Create a jangling
souvenir charm
bracelet

by **Stephanie Gard Buss**

I have never been to Paris, but it's a dream of mine to go there and spend my days browsing through flea markets and patisseries. The bracelet was inspired by this dream — and by all of the French-themed Nunn Design findings. I wanted to combine these components with some from my own collection, including a jaunty vintage rooster — when else would he get his time to shine?

components



1 resin charm • Punch or cut out a ½-in. (1.3 cm) circular image from a collage sheet. Follow the manufacturer's directions to adhere the image to a bezel. Use a paintbrush to apply a thin layer of glue or sealant over the image. Allow to dry.



2 Mix resin according to the manufacturer's directions. Fill each bezel half full with resin and allow to cure until set but still tacky, about two hours.



3 Mix resin. Sprinkle glitter into the bezel and fill the bezel with resin. Allow to cure overnight.



4 On a head pin, string a bead and make a wrapped loop (Basics).



5 Open a 4–6 mm jump ring (Basics). Attach the bead unit and the bottom loop of the bezel. Close the jump ring.



bead cap units • On a head pin, string one or two beads and a bead cap. Make a wrapped loop (Basics). Make three or four bead cap units.



1 chaton charm • Place a chaton in a prong setting. Use chainnose pliers to press down the prongs.



2 Open a 4–6 mm jump ring (Basics). Attach a loop of the prong setting and a charm, and close the jump ring.



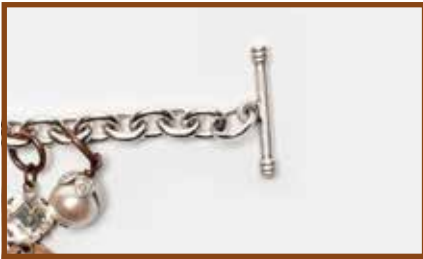
embellished charm • Apply craft glue to a flat flower component and a charm. Press together and allow to dry. Make one or two embellished charms.



1 bracelet • Make the components (p. 2). Separate a 6–7-in. (15–18 cm) piece of chain, opening and closing the links as you would a jump ring (Basics). Use an 8–9 mm jump ring or chain link to attach the resin charm and the center link.



2 On each side, skip a link and use a jump ring or chain link to attach a charm or component. Attach charms to the remaining links as desired.



3 On each end, use a jump ring to attach half of a toggle clasp.

Contact Stephanie at maxandlucie@gmail.com or visit maxandlucie.etsy.com or ollapodrida.etsy.com.

Supplies

bracelet

- ◆ **9–12** 12–22 mm charms
- ◆ 20 mm circle bezel
- ◆ 10 mm prong setting
- ◆ **5–6** 4–10 mm beads
- ◆ 8–9 mm chaton
- ◆ **1–2** 8 mm flat flower components
- ◆ **3–4** 7–9 mm bead caps
- ◆ 6–7 in. (15–18 cm) piece of chain, 8–9 mm links
- ◆ **3–4** 1½-in. (3.8 cm) head pins
- ◆ **15–19** 8–9 mm jump rings or chain links
- ◆ **9–12** 4–6 mm jump rings
- ◆ toggle clasp
- ◆ chainnose and roundnose pliers
- ◆ diagonal wire cutters
- ◆ Paris collage sheet
- ◆ two-part resin
- ◆ craft glue or sealant
- ◆ glitter
- ◆ paintbrush
- ◆ circle punch or scissors

“Oui” charm and Eiffel Tower charm from Dime Store Emporium, dimestoreemporium.com. Remaining charms and Paris collage sheet from Nunn Design, nunndesign.com.