

Beaded blackwork

This bracelet was inspired by blackwork embroidery, which was popular during Tudor and Elizabethan times in England. Using black silk thread on cream or white linen, it was used to decorate clothing and household items.

Following the pattern (figure 1), work the band in square stitch (Basics) or on a loom (Basics) with 11° cylinder beads. To begin embellishing one edge of the band, exit an end cylinder, pick up three black cylinders, skip a thread bridge, sew under the following thread bridge, and sew back through the last cylinder added (figure 2, a–b). For the remaining embellishment stitches along this edge, pick up two cylinders, sew under the next thread bridge, and sew back through the last cylinder added (b–c). Repeat to embellish the other long edge of the band.

Create a toggle bar by stitching a strip of flat even-count peyote stitch (Basics) 16 beads wide and eight rows long. Roll the strip into a tube, and zip up (Basics) the end rows. On one end of the band, attach the toggle bar to the center bead. On a new length of thread, pick up about 30 cylinders to make a ring large enough to fit around the toggle bar. Work a round of peyote stitch off the ring, and attach it to the center bead on the other end of the band. The pattern measures 6¾ x 1¼ in. (17.1 x 3.2 cm) not including the loop-and-toggle closure.

– Judith Hind
judithhind@tiscali.co.uk

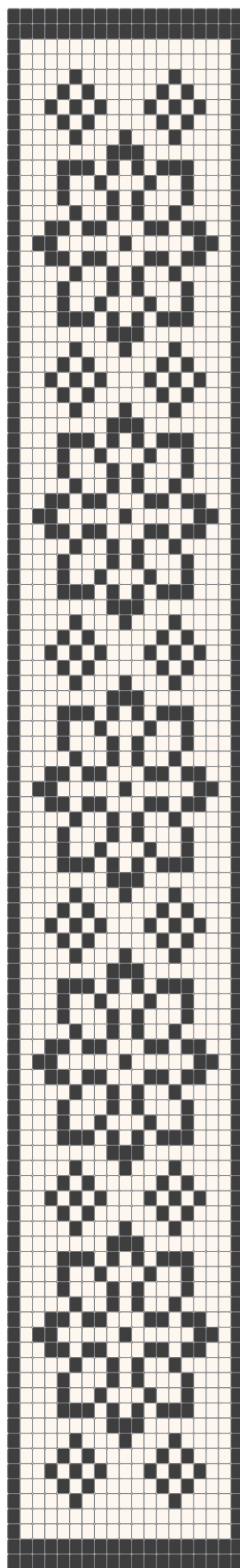


FIGURE 1

- DB-10 black opaque
- DB-211 alabaster opaque luster

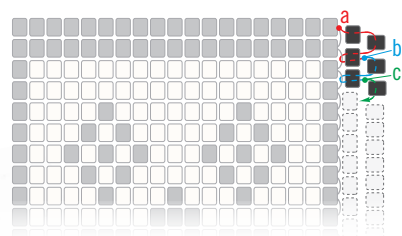


FIGURE 2



Stitched by Judith Hind