

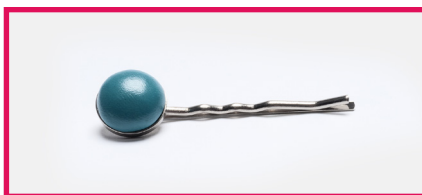
Bejeweled bobby pins

Use two-part clay as a base for sparkling hair accessories ♦ by **Stephanie Dixon**

These crystallized beauties are a cinch to make. Just mix up the clay and dome it as you like — and keep in mind that you'll need more chatons to cover the extra surface area of the dome. Then let it cure — no kiln required.



1 **bobby pin** • Mix equal parts of clay according to the package directions. You'll need about a pea-sized amount of combined clay.



2 Press the clay into the bezel of a bobby pin, doming it as desired.



3 Using tweezers or a toothpick with a bit of putty on the end, press chatons in the clay as desired (Tip, below). Allow to cure for 24 hours. *

Tip

For an iridescent effect as in the burgundy and lavender bobby pins, try MetalFX powder (BeadFX, beadfx.com). Apply a generous layer of powder after setting the chatons. Once the clay has cured, use a soft cloth to remove excess powder.

Stephanie Dixon

Stephanie is a Create Your Style with Swarovski Elements Ambassador. At workshops, she shares her knowledge about application possibilities, techniques, and design ideas. She also blogs about beading, crochet, wirework, and jewelry making. A native of Montreal, she now resides in Toronto. Contact Stephanie at thedixonchick.com.



Supplies

bobby pin

- ♦ 20–40 1.5–6 mm chatons
- ♦ bobby pin with bezel
- ♦ Crystal Clay
- ♦ tweezers or toothpick with wax or putty

Bobby pin from Thunder Rock Sports Jewelry, 918.902.9001, thunderrocksportsjewelry.com. Crystal Clay from Crystal Clay, 800.381.4080, crystalclayonline.com. Check your local bead store for supplies.